

ACOUSTI-SEAL® ENCORE® SERIES TECHNICAL DATA

THE ACOUSTI-SEAL® ENCORE® SINGLE PANEL SYSTEM

- Provides the ultimate in flexibility
- Each panel is moved independently into position
- Ideal for applications that require especially tall panels
- Each panel is supported by two carriers
- Single panels are often used in multipurpose rooms, exhibition halls, and commercial buildings where maximum flexibility is required
- Suspension system incorporates the easy to operate switch and curve Smart Track™
- Smart Track technology, with programmable trolleys and automatic panel positioning, makes panel storage almost foolproof
- May be fabricated to satisfy right angle turn layouts
- Single panels allow multiple room setups, changes in the location of pass doors and work surfaces, and remote panel storage

Modernfold Model

Acousti-Seal® Encore® - Single Panel

Flat Panels, Individual Operation

This specification along with product information and model details can be downloaded from www.modernfold.com

SPECIFICATION - SECTION 10 22 26 (10650) OPERABLE PARTITIONS

PART 1 - GENERAL

1.1 RELATED DOCUMENTS

A. Drawings and general provisions of the Contract including General and Supplementary Conditions and Division 01 Specification Sections, apply to this Section.

1.2 SUMMARY

- A. This Section includes the following:
1. Manually operated, individual panel operable partitions.
- B. Related Sections include the following:
1. Division 03 Sections for concrete tolerances required.
 2. Division 05 Sections for primary structural support, including pre-punching of support members by structural steel supplier per operable partition supplier's template.
 3. Division 06 Sections for wood framing & supports, and all blocking at head and jambs as required.
 4. Division 09 Sections for wall and ceiling framing at head and jambs.

1.3 QUALITY ASSURANCE

- A. Installer Qualifications: An experienced installer who is certified in writing by the operable partition manufacturer, as qualified to install the manufacturer's partition systems for work similar in material, design, and extent to that indicated for this Project.
- B. Acoustical Performance: Test operable partitions in an independent acoustical laboratory in

accordance with ASTM E90 test procedure to attain no less than the STC rating specified.

Provide a complete and unedited written test report by the testing laboratory upon request.

- C. Preparation of the opening shall conform to the criteria set forth per ASTM E557 Standard Practice for Architectural Application and Installation of Operable Partitions.

1.4 SUBMITTALS

- A. Product Data: Material descriptions, construction details, finishes, installation details, and operating instructions for each type of operable partition, component, and accessory specified.
- B. Shop Drawings: Show location and extent of operable partitions. Include plans, elevations, sections, details, attachments to other construction, and accessories. Indicate dimensions, weights, conditions at openings, and at storage areas, and required installation, storage, and operating clearances. Indicate location and installation requirements for hardware and track, including floor tolerances required and direction of travel. Indicate blocking to be provided by others.
- C. Setting Drawings: Show imbedded items and cutouts required in other work, including support beam punching template.
- D. Samples: Color samples demonstrating full range of finishes available by architect. Verification samples will be available in same thickness and material indicated for the work.

ACOUSTI-SEAL® ENCORE® SERIES TECHNICAL DATA

1.5 DELIVERY, STORAGE, AND HANDLING

- A. Clearly mark packages and panels with numbering systems used on Shop Drawings. Do not use permanent markings on panels.
- B. Protect panels during delivery, storage, and handling to comply with manufacturer's direction and as required to prevent damage.

1.6 WARRANTY

- A. Provide written warranty by manufacturer of operable partitions agreeing to repair or replace any components with manufacturing defects.
- B. Warranty period: Three (3) years.

PART 2 – PRODUCTS

2.1 MANUFACTURERS, PRODUCTS, AND OPERATION

- A. Manufacturers: Subject to compliance with requirements, provide products by the following:
 - 1. Modernfold, Inc.
- B. Products: Subject to compliance with the requirements, provide the following product:
 - 1. Acousti-Seal® Encore® – Single Panel: Manually operated individual panel operable partition.

2.2 OPERATION

- A. Acousti-Seal® Encore® – Single Panel: Series of individual flat panels, manually operated, top supported with operable floor seals and automatic top seals.
- B. Final Closure:
 - 1. Horizontally expanding panel edge with removable crank

2.3 PANEL CONSTRUCTION

- A. Nominal 4-1/4-inch (108 mm) thick panels in manufacturer's standard 51-inch (1295 mm) widths. All panel horizontal and vertical framing members fabricated from minimum 16-gage formed steel with overlapped and welded corners for rigidity. Top channel is reinforced to support suspension system components. Frame is designed so that full vertical edges of panels are of formed steel and provide concealed protection of the edges of the panel skin.
- B. Panel Skin Options:
 - 1. Roll-formed steel wrapping around panel edge. Panel skins shall be lock formed and welded directly to the frame for unitized construction. Acoustical ratings of panels with this construction:
 - a. 52 STC
 - b. 54 STC
 - c. 56 STC

- C. Hinges for Pass Doors, and Pocket Doors shall be (select one):
 - 1. Full leaf butt hinges, attached directly to panel frame with welded hinge anchor plates within panel to further support hinge mounting to

frame. Lifetime Warranty on hinges. Hinges mounted into panel edge or vertical astragal are not acceptable.

- 2. SOSS® Invisible laminated hinge with antifriction segments mounted between each heat treated link. Hinge to be attached directly to panel frame. Welded internal hinge bracket shall support the hinge and allow for adjustment of hinge plates. Concealed hinges mounted into panel edge or vertical astragal are not acceptable.
- D. Panel Trim: No vertical or horizontal trim required or allowed on edges of panels; minimal groove appearance at panel joints.
- E. Panel Weight:
 - Steel Skin
 - 1. 52 STC – 8.2 lbs./square foot
 - 2. 54 STC – 9.5 lbs./square foot
 - 3. 56 STC – 11.9 lbs./square foot

2.4 PANEL FINISHES

- A. Panel face finish shall be (select as required):
 - 1. Reinforced vinyl with woven backing weighing not less than 21 ounces per lineal yard.
 - 2. Reinforced heavy duty vinyl with woven backing weighing not less than 30 ounces per lineal yard.
 - 3. Acoustical, non-woven needle punch carpet, with fused fibers to prevent unraveling or fray of material.
 - 4. Wall covering and upholstery fabric with surface treatment to resist stains.
 - 5. Customer's own material (subject to factory approval).
 - 6. Full height steel markerboard work surface.
 - 7. Full height 1/4-inch (6.35 mm) natural cork tackboard with vinyl or fabric covering.
 - 8. Uncovered for field finishing.
 - 9. Primed for field finishing.
- B. Panel trim: No exposed panel trim required or allowed, hardware to be of one consistent color (select one):
 - 1. Dark Bronze
 - 2. Smoke Gray
 - 3. Natural Choice

2.5 SOUND SEALS

- A. Vertical Interlocking Sound Seals between panels: Roll-formed steel astragals, with tongue and groove configuration in each panel edge. Rigid plastic or aluminum astragals are not acceptable.
- B. Horizontal Top Seals shall be Modernfold SureSet™ automatic operable top seals, manually operated operable top seals not required or permitted.
- C. Horizontal Bottom Seals shall be Modernfold SureSet™ bottom seal (select one):
 - 1. SA2 - Automatic bottom seals providing nominal 2-inch (51 mm) operating clearance

ACOUSTI-SEAL® ENCORE® SERIES TECHNICAL DATA

with an operating range of +1/2-inch (13 mm) to -1-1/2-inch (38 mm) which automatically drop as panels are positioned, without the need for tools or cranks. Extended seal shall exert nominal 120 pounds (265 kg) downward force to the floor throughout operating range.

2. SA4 - Automatic bottom seals providing nominal 4-inch (102 mm) operating clearance with an operating range of +1/2-inch (13 mm) to -3-1/2-inch (89 mm) which automatically drop as panels are positioned, without the need for tools or cranks. Extended seal shall exert nominal 120 pounds (265 kg) downward force to the floor throughout operating range.
3. SM2 - Manually activated seals providing nominal 2-inch (51 mm) operating clearance with an operating range of +1/2-inch (13 mm) to -1-1/2-inch (38 mm). Seal shall be operable from panel edge or face. Extended seal shall exert nominal 120 pounds (265 kg) downward force to the floor throughout operating range.
4. SM4 - Manually activated bottom seals providing nominal 4-inch (102 mm) operating clearance with an operating range of +1/2-inch (13 mm) to -3-1/2-inch (89 mm). Seal shall be operable from panel edge or face. Extended seal shall exert nominal 120 pounds (265 kg) downward force to the floor throughout operating range.

2.6 SUSPENSION SYSTEM (select one)

- A. #17 Suspension System - Smart Track™
1. Suspension Tracks: Minimum 11-gage, 0.12-inch (3.04 mm) roll-formed steel track, supported by adjustable steel hanger brackets, supporting the load-bearing surface of the track, connected to structural support by pairs of 3/8-inch (9.5 mm) diameter threaded rods. Aluminum track is not acceptable.
 - a. Exposed track soffit: Steel, integral to track, and pre-painted off-white.
 2. Carriers: Two all-steel trolleys with steel tired ball bearing wheels. Non-steel tires are not acceptable. Suspension system shall provide automatic indexing of panels into stack area using preprogrammed switches and trolleys without electrical, pneumatic, or mechanical activation.

- OR -

- B. #14 Suspension System - Smart Track
1. Suspension Tracks: Minimum 7-gage, 0.18-inch (4.57 mm) roll formed steel. Track shall be supported by adjustable steel hanger brackets connected to structural support pairs of 1/2-inch (13 mm) diameter threaded rods. Brackets must support the load bearing surface of the track.
 - a. Exposed track soffit: Steel, removable for

service and maintenance, attached to track bracket without exposed fasteners, and pre-painted off-white.

2. Carriers: Two all-steel trolleys with steel tired ball bearing wheels. Non-steel tires are not acceptable. Suspension system shall provide automatic indexing of panels into stack area using preprogrammed switches and trolleys without electrical, pneumatic, or mechanical activation.

- OR -

- C. RT100 Suspension System – Multi-Directional
1. Suspension Tracks: Precision heat-treated extruded aluminum. Track to be supported by pairs of 3/8-inch (9.5 mm) diameter threaded rods.
 - a. Exposed track soffit: Aluminum, integral to track:
 - i. Standard: Clear anodized finish.
 - ii. Optional: Pre-painted off-white.
 2. Carriers: Shall have horizontal counter-rotating wheels with heavy duty steel thrust bearings. Carriers permit panels to traverse L, T, or X intersections without mechanical switching.

- OR -

- D. RT200 Suspension System – Multi-Directional
1. Suspension Tracks: Precision heat-treated extruded aluminum. Track to be supported by pairs of 3/8-inch (9.5 mm) diameter threaded rods.
 - a. Exposed track soffit: Aluminum, integral to track:
 - i. Standard: Clear anodized finish.
 - ii. Optional: Pre-painted off-white.
 2. Carriers: Shall have horizontal counter-rotating wheels with oversized, steel reinforced, heavy duty steel thrust bearings. Carriers permit panels to traverse L,T, or X intersections without mechanical switching.

- OR -

- E. Modernfold Truss System: Pre-fabricated, self-supporting header system for the support of operable partitions. (For complete specification see Modernfold Truss System brochure Form #2600)

2.7 OPTIONS

- A. Single Pass Doors:
1. Matching pass door same thickness and appearance as the panels. ADA compliant pass door to be trimless and equipped with friction latch and flush pulls for panic operation. No threshold will be permitted.
 2. Hardware:
 - a. Hand pull with push plate.
 - b. Lever handles both sides of door
 - c. Panic hardware with or without locking lever handle.
 - d. Automatic door closer.
 - e. Self-illuminated exit signs.

ACOUSTI-SEAL® ENCORE® SERIES TECHNICAL DATA

- B. Double Pass Doors:
1. Matching pass door same thickness and appearance as the panels. No center post is permitted. Active leaf to be trimless and equipped for panic operation. No threshold will be permitted.
 2. Hardware:
 - a. Hand pull with push plate.
 - b. Lever handles both sides of door
 - c. Panic hardware with or without locking lever handle.
 - d. Automatic door closer.
 - e. Self-illuminated exit signs.
- C. Work Surfaces:
1. Markerboard: White enamel on steel, bonded to the face of the panel with horizontal trim without exposed fasteners. Trim is not acceptable on vertical edges to provide uninterrupted work surface.
 2. Tackboard: Minimum 1/4-inch (6.35 mm) natural cork, covered with vinyl or fabric, with horizontal trim without exposed fasteners. Trim is not acceptable on vertical edges.
- D. Available Accessories/Options:
1. Pocket Doors: Acousti-Seal Pocket Doors by Modernfold, Inc., with same finish and appearance as the adjacent panels.
 2. Intersecting partition interface.

- D. Broken, cracked, chipped, deformed or unmatched panels are not acceptable.

3.2 CLEANING AND PROTECTION

- A. Clean partition surfaces upon completing installation of operable partitions to remove dust, dirt, adhesives, and other foreign materials according to manufacturer's written instructions.
- B. Provide final protection and maintain conditions in a manner acceptable to the manufacturer and installer that insure operable partitions are without damage or deterioration at time of Substantial Completion.

3.3 ADJUSTING

- A. Adjust operable partitions to operate smoothly, easily, and quietly, free from binding, warp, excessive deflection, distortion, nonalignment, misplacement, disruption, or malfunction, throughout entire operational range. Lubricate hardware and other moving parts.

3.4 EXAMINATION

- A. Examine flooring, structural support, and opening, with Installer present, for compliance with requirements for installation tolerances and other conditions affecting performance of operable partitions. Proceed with installation only after unsatisfactory conditions have been corrected.

3.5 DEMONSTRATION

- A. Demonstrate proper operation and maintenance procedures to Owner's representative.
- B. Provide Operation and Maintenance Manual to Owner's representative.

PART 3 – EXECUTION

3.1 INSTALLATION

- A. General: Comply with ASTM E557, operable partition manufacturer's written installation instructions, Drawings and approved Shop Drawings.
- B. Install operable partitions and accessories after other finishing operations, including painting have been completed.
- C. Match operable partitions by installing panels from marked packages in numbered sequence indicated on Shop Drawings.

STC CONSTRUCTION AND TRACK SYSTEM HEIGHT LIMITATIONS

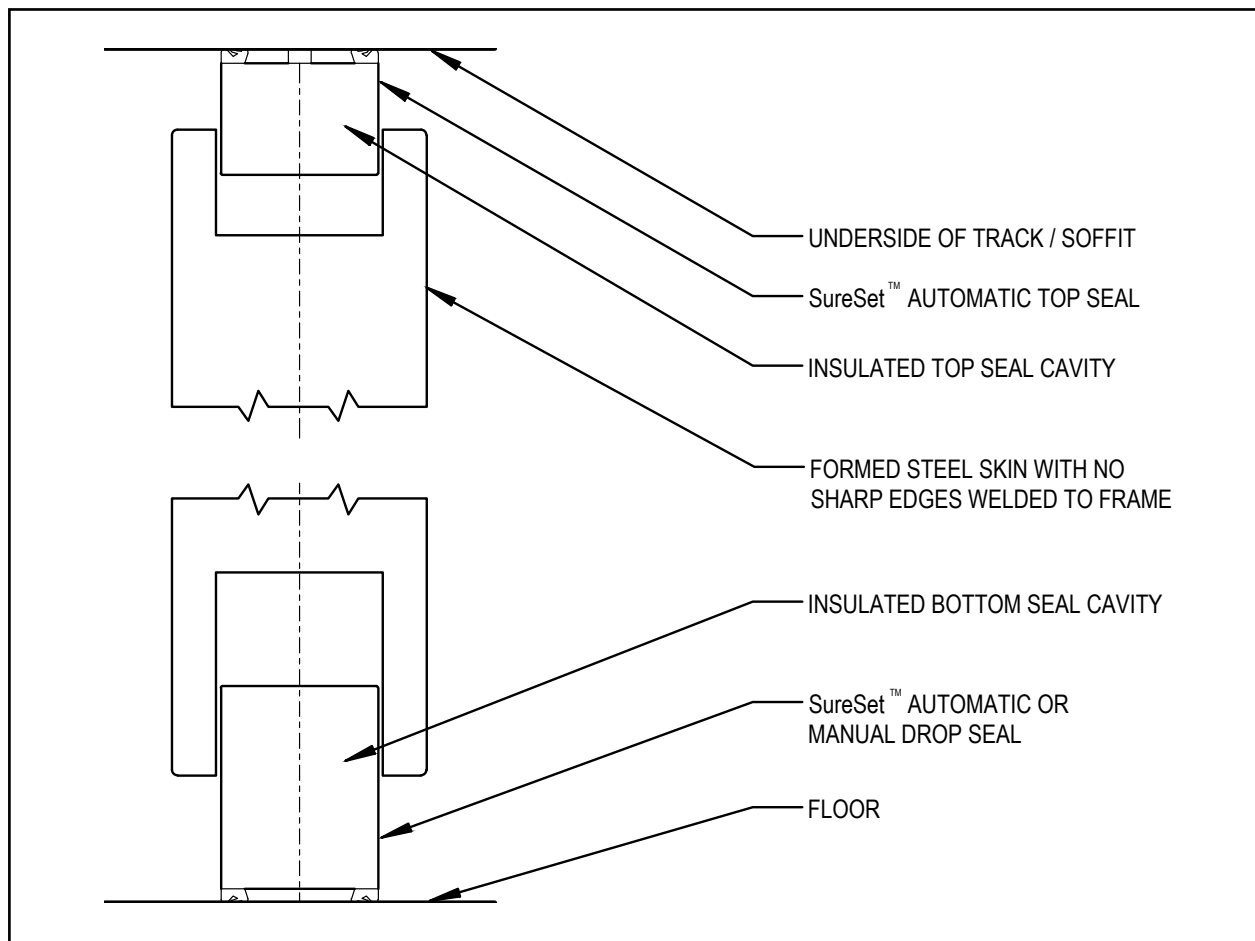
Acousti-Seal® Encore®	52 STC	54 STC	56 STC
#17 Bracket Mounted Smart Track	21'-4" (6502 mm)	21'-4" (6502 mm)	N/A
#14 Bracket Mounted Smart Track*	28'-4" (8636 mm)	28'-4" (8636 mm)	19'-4" (5893 mm)
RT100 Multi-Directional Right Angle Track	16'-4" (4978 mm)	16'-4" (4978 mm)	16'-4" (4978 mm)
RT200 Multi-Directional Right Angle Track	20'-4" (6198 mm)	20'-4" (6198 mm)	20'-4" (6198 mm)

*Custom engineered solutions up to 50-feet.

ACOUSTI-SEAL® ENCORE® SERIES TECHNICAL DATA STEEL SKIN PANEL CONSTRUCTION

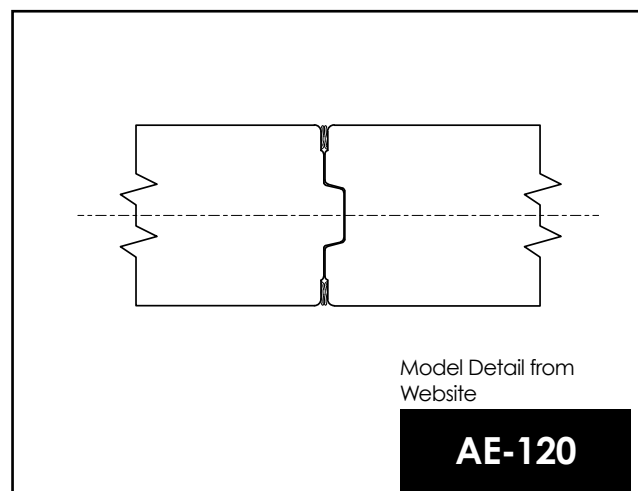
Acousti-Seal® Encore®
Panel Section Frame Details

PANEL DETAILS ARE NOT TO SCALE



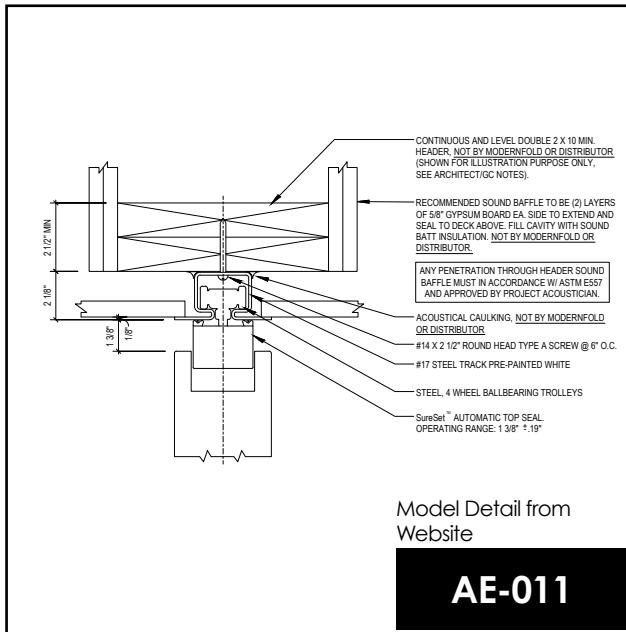
Acousti-Seal® Encore®
Standard Panel Joint

Roll-formed skin wraps completely around the edge of vertical 16-gage steel channel and is locked in place, eliminating any sharp edges and creating a unitized panel. The outer covering is secured under the aluminum astragal to prevent peeling.

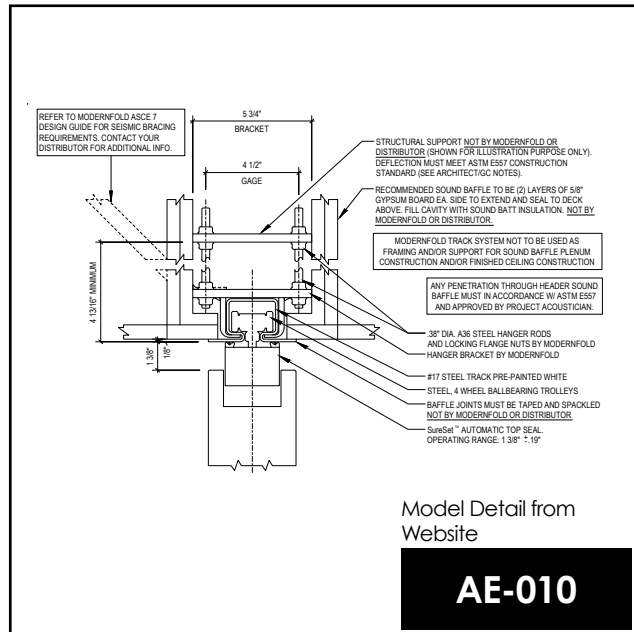


ACOUSTI-SEAL® ENCORE® SERIES TECHNICAL DATA
SUSPENSION SYSTEM OPTIONS

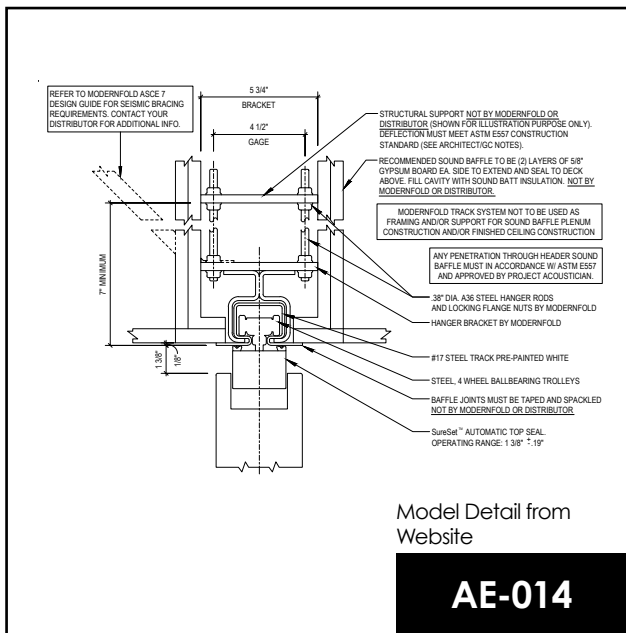
#17 Track System Direct Mount
 (Smart Track Shown)



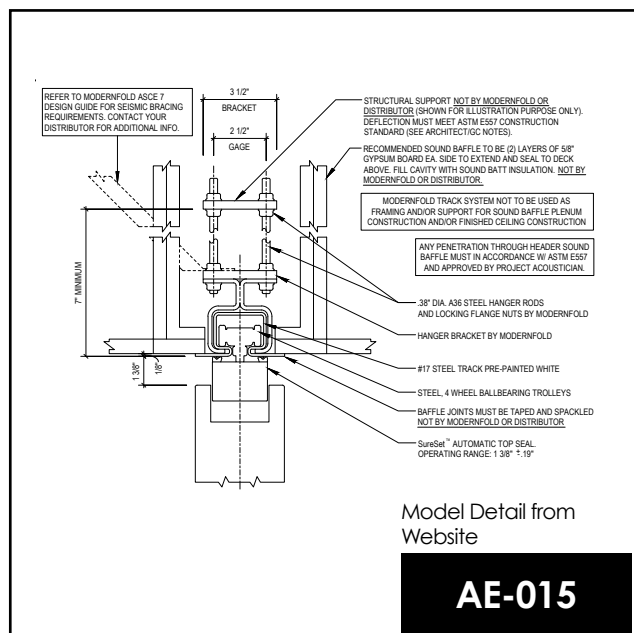
#17 Track System Bracket Mount
 (Smart Track Shown)



#17 Track System Bracket Mount
 Heavy-Duty 4.50\" (Smart Track System)

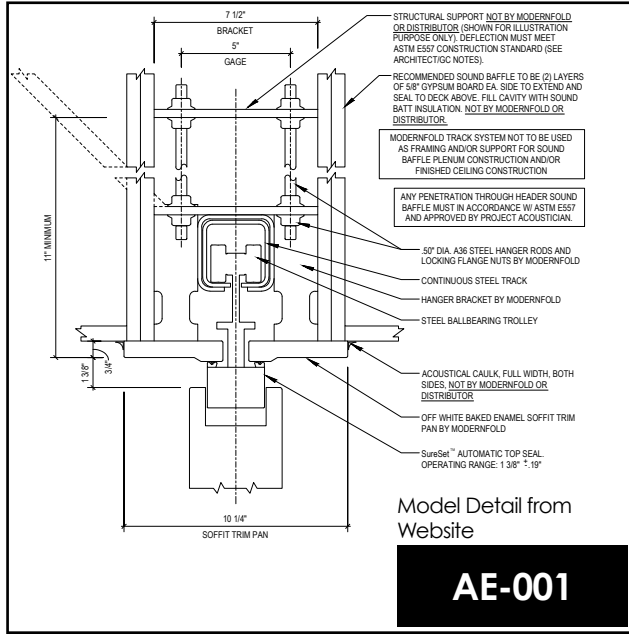


#17 Track System Bracket Mount
 Heavy-Duty 2.50\" (Smart Track System)

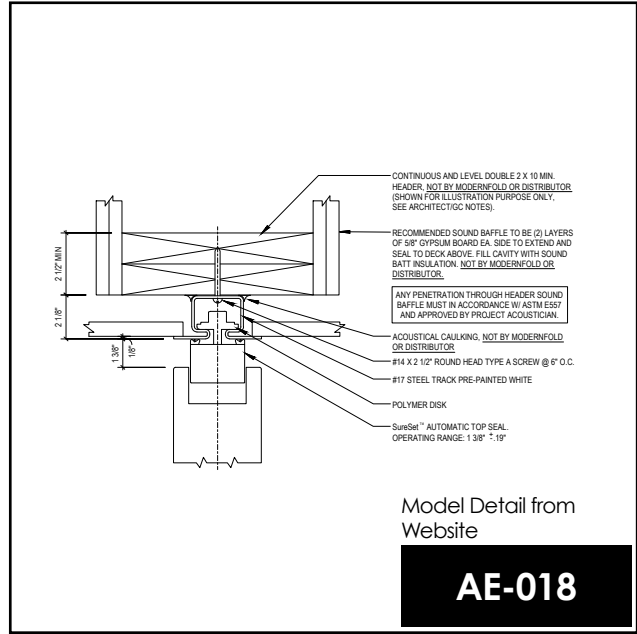


ACOUSTI-SEAL® ENCORE® SERIES TECHNICAL DATA
SUSPENSION SYSTEM OPTIONS

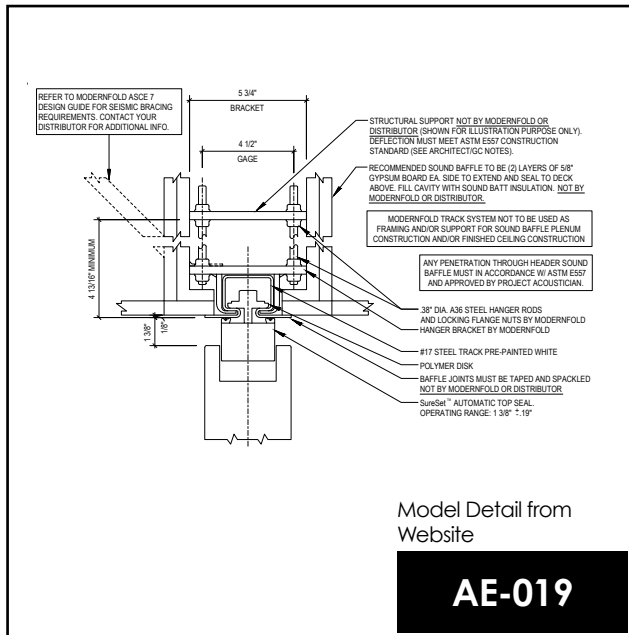
#14 Track System Direct Mount
 (Smart Track Shown)



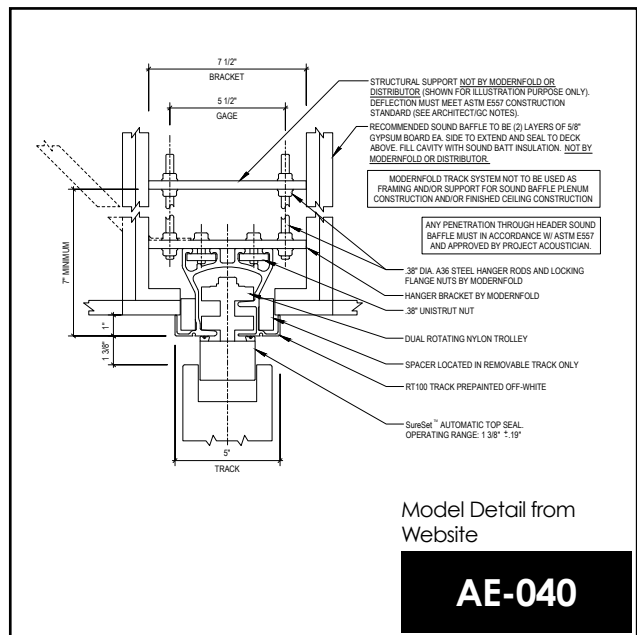
#17 Track System Direct Mount
 (Right Angle Shown)



#17 Track System Bracket Mount
 (Right Angle Shown)

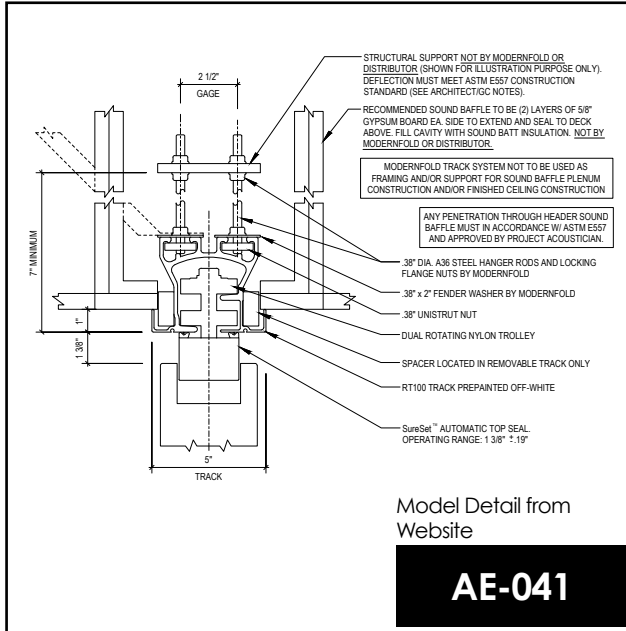


RT100 Multi-Directional
 Suspension System - 5.50"

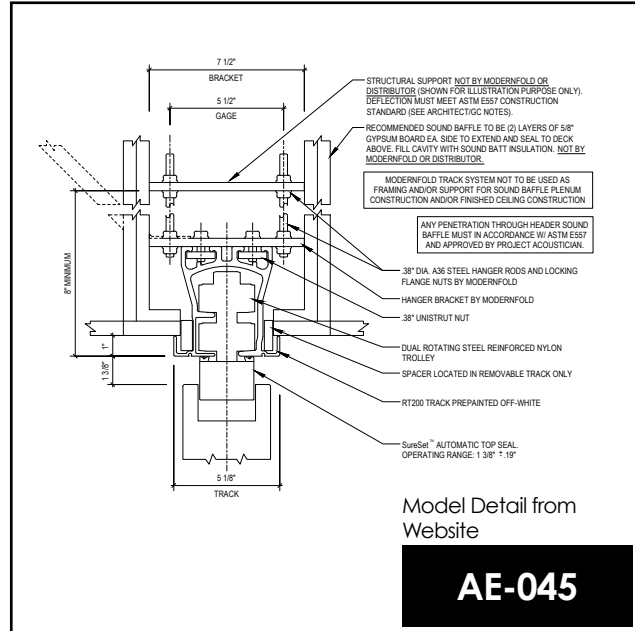


ACOUSTI-SEAL® ENCORE® SERIES TECHNICAL DATA
SUSPENSION SYSTEM OPTIONS

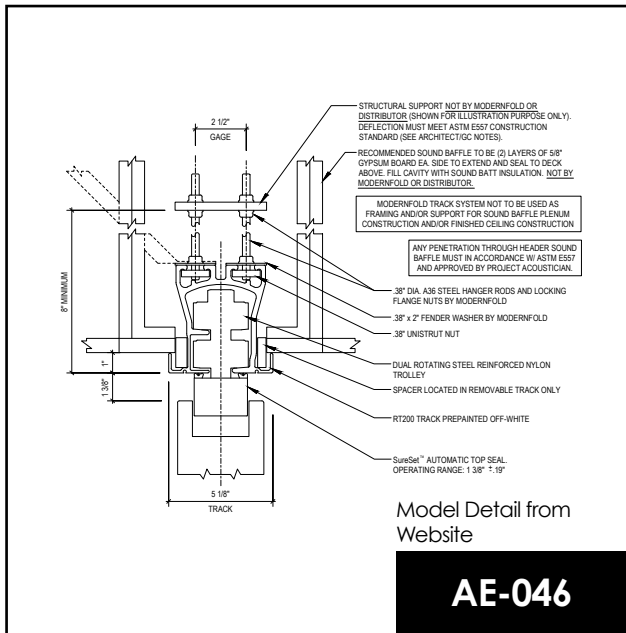
RT100 Multi-Directional
 Suspension System - 2.50"



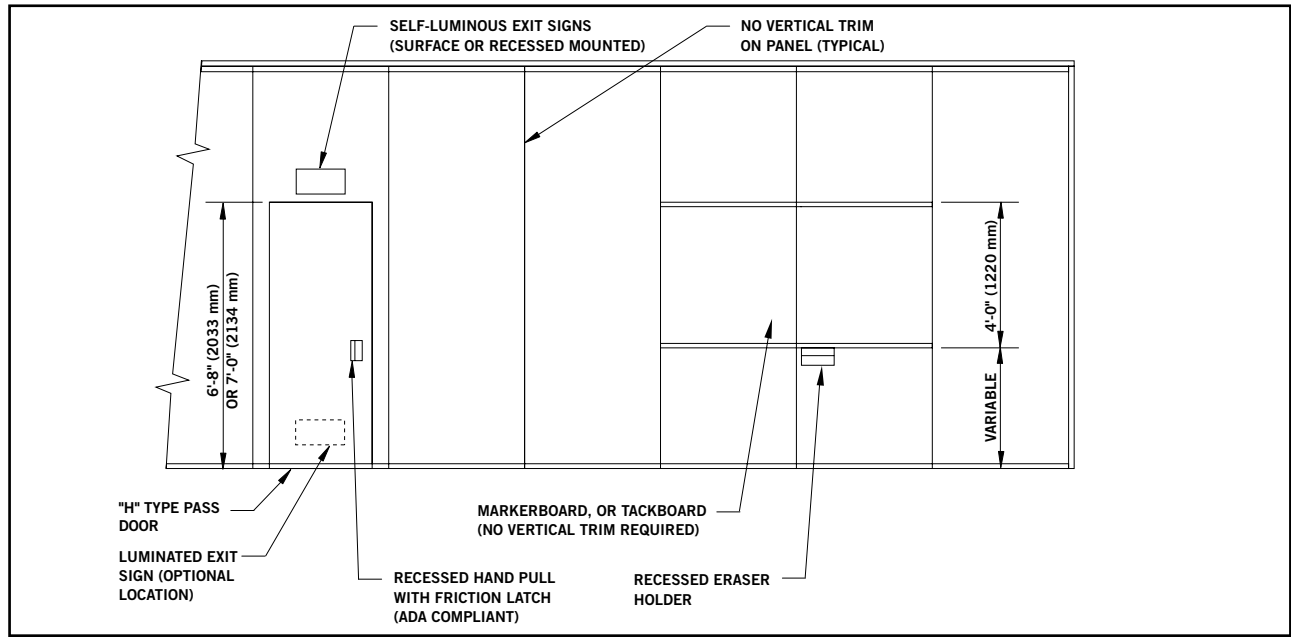
RT200 Multi-Directional
 Suspension System - 5.50"



RT200 Multi-Directional
 Suspension System - 2.50"

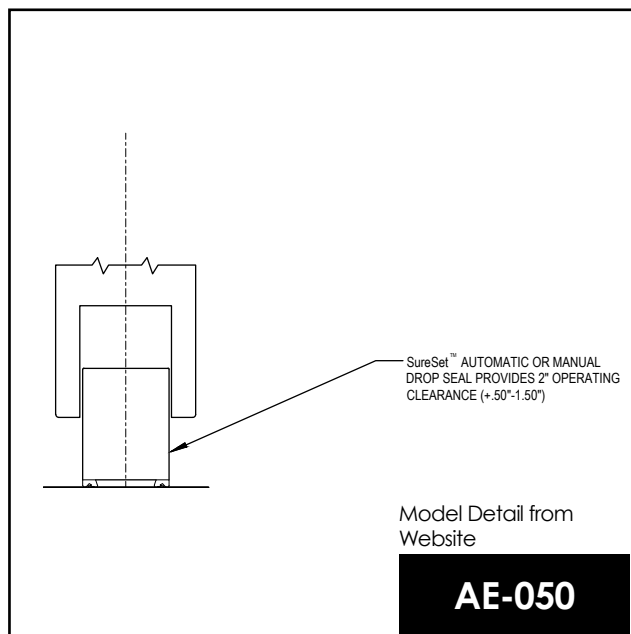


**ACOUSTI-SEAL® ENCORE® SERIES TECHNICAL DATA
 PANEL, WORK SURFACE, AND PASS DOOR OPTIONS**

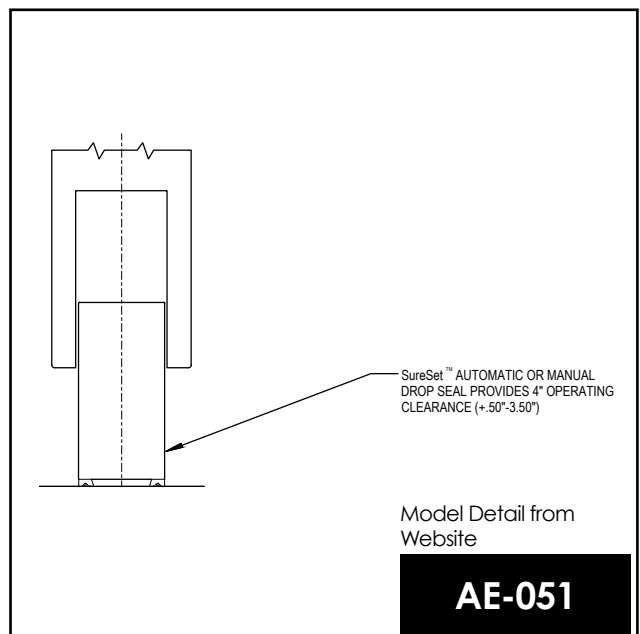


FLOOR SEAL OPTIONS

SureSet™ 2-inch Automatic or 2-inch Manual Seal

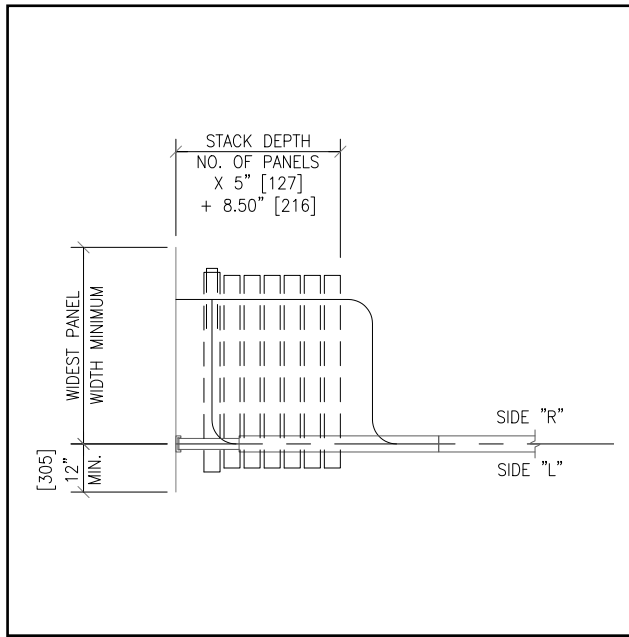


SureSet™ 4-inch Automatic or 4-inch Manual Seal

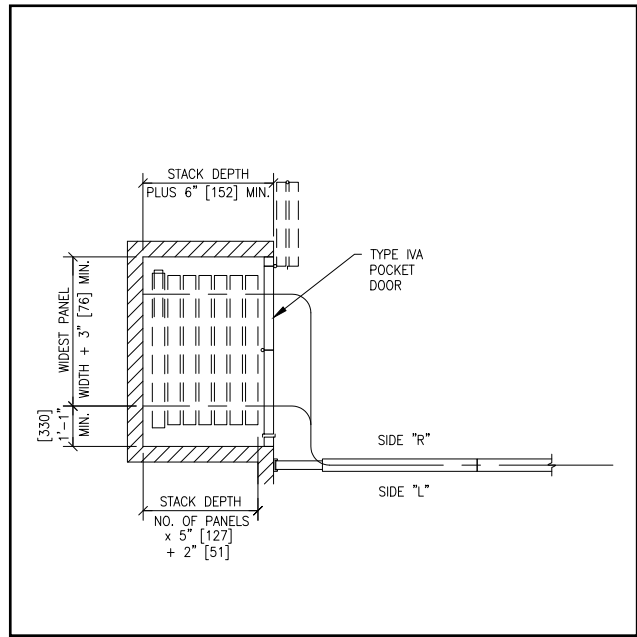


ACOUSTI-SEAL® ENCORE® SERIES TECHNICAL DATA
POCKET ENCLOSURE AND STACKING OPTIONS

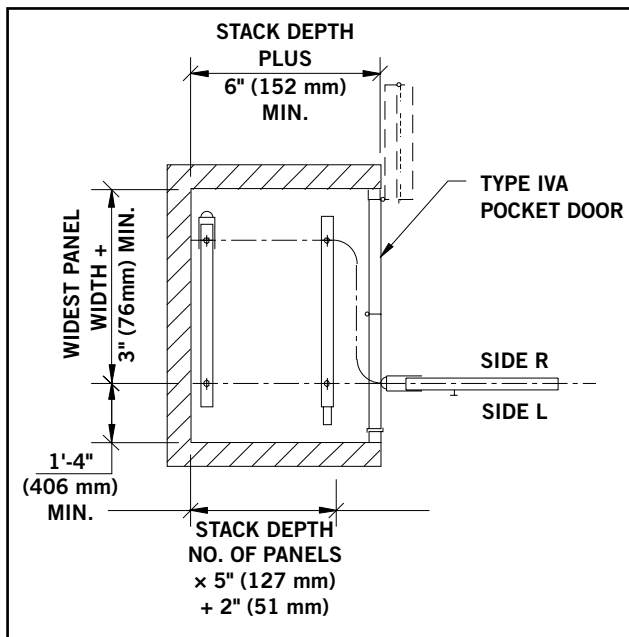
Expandable Closure – 90 Degree Side Stack Smart Track



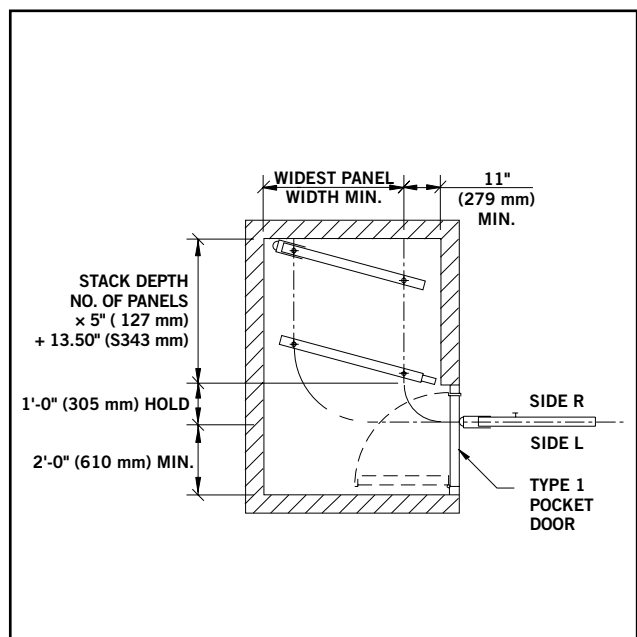
Remote Expandable Closure – Off-set Stack Smart Track



Remote Expandable Closure – 90 Degree Side Stack (Flat Stack) Smart Track

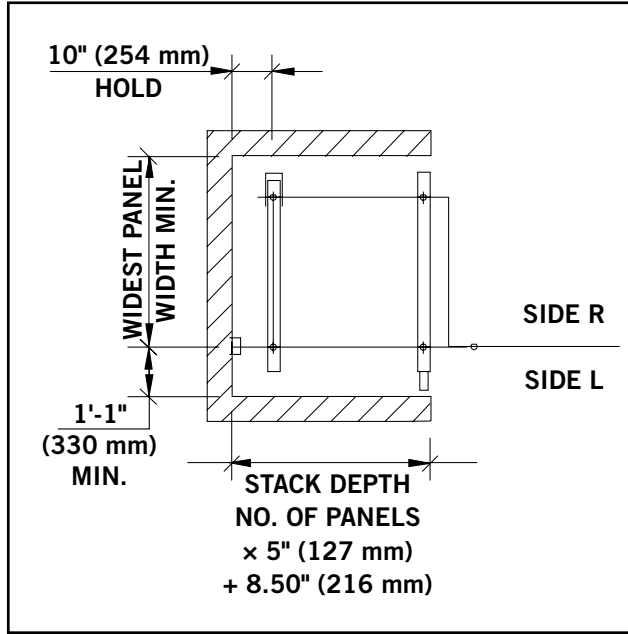


Remote Expandable Closure – Parallel Stack (Angle Stack) Smart Track

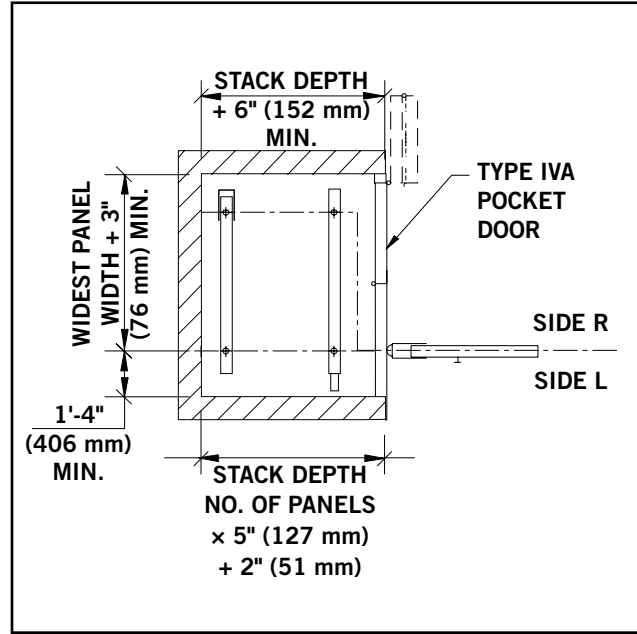


ACOUSTI-SEAL® ENCORE® SERIES TECHNICAL DATA
POCKET ENCLOSURE AND STACKING OPTIONS

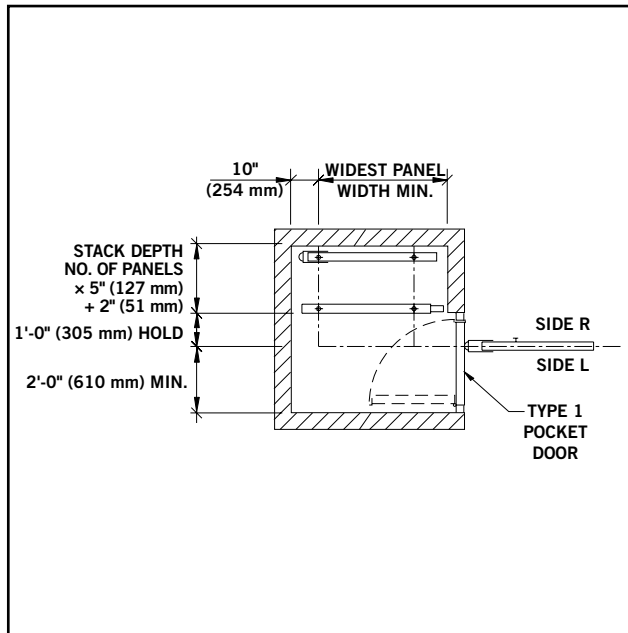
Expandable Closure –
 90 Degree Side Stack Right Angle



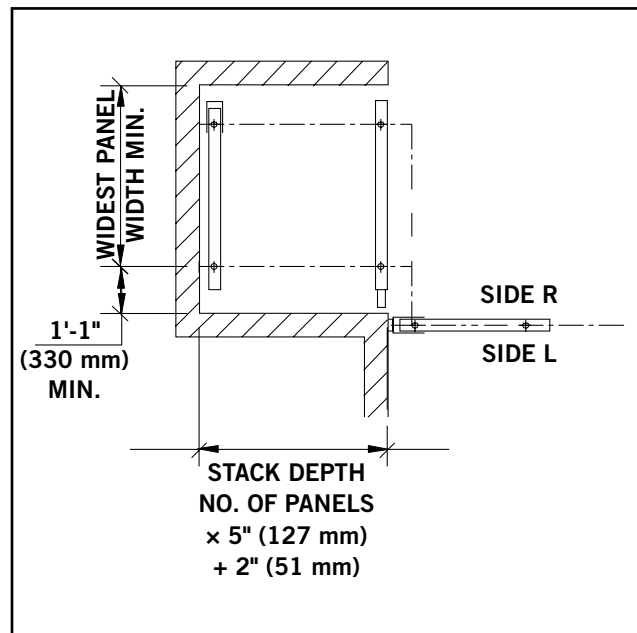
Remote Expandable Closure –
 90 Degree Side Stack Right Angle



Remote Expandable Closure –
 Parallel Stack Right Angle

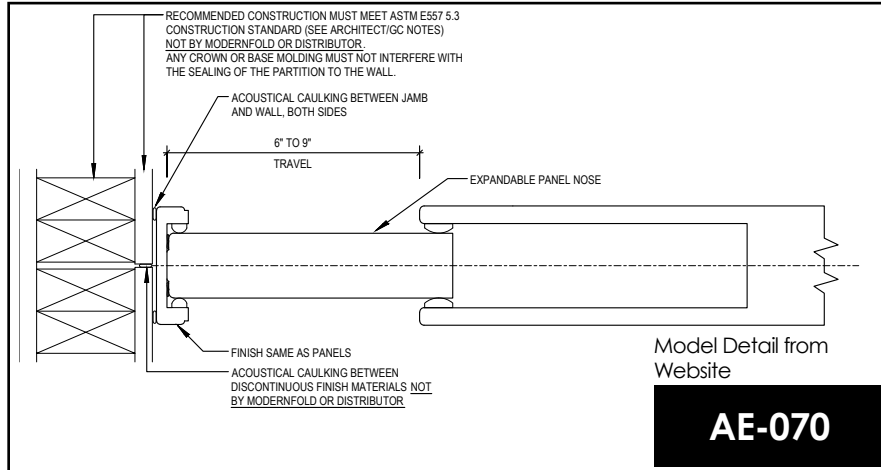


Remote Expandable Closure –
 Offset Stack Right Angle

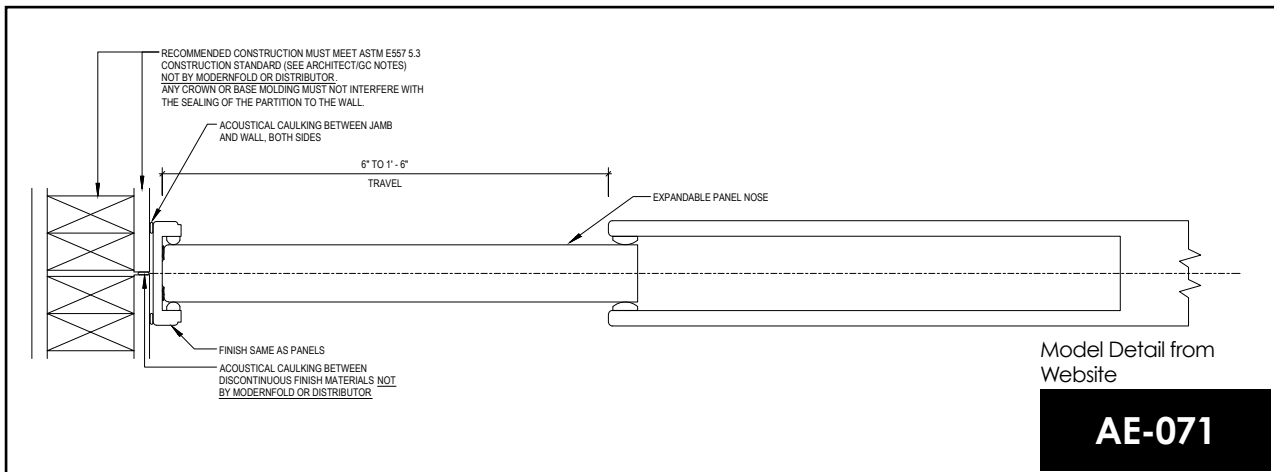


ACOUSTI-SEAL® ENCORE® SERIES TECHNICAL DATA PANEL CROSS SECTIONS

9" Expandable Panel w/ Jamb

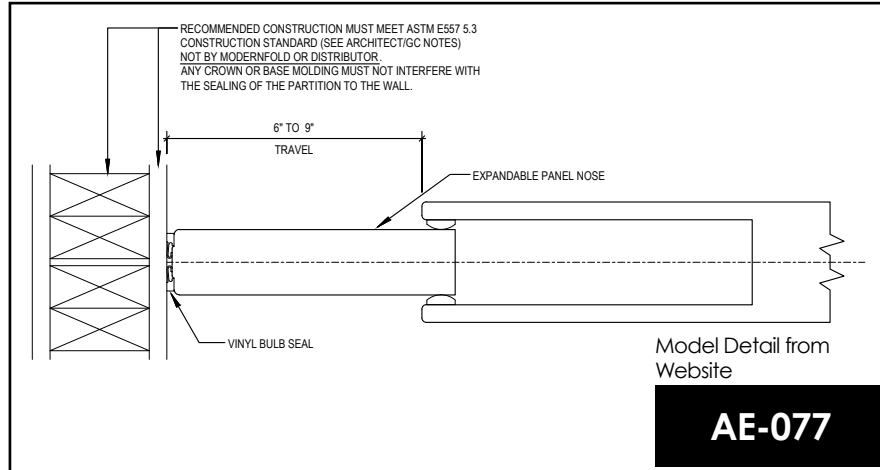


18" Expandable Panel w/ Jamb

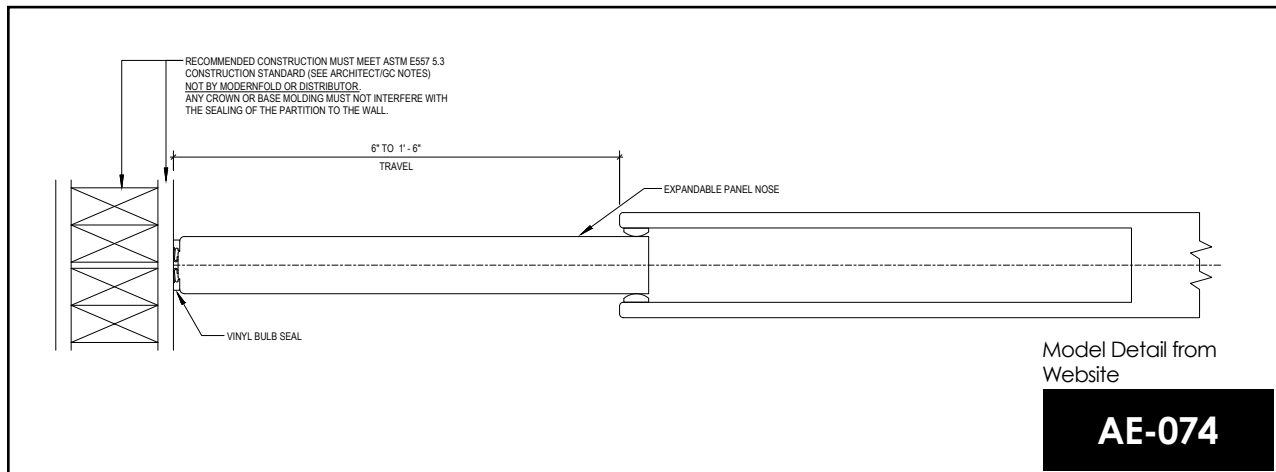


ACOUSTI-SEAL® ENCORE® SERIES TECHNICAL DATA PANEL CROSS SECTIONS

9" Expandable Panel w/ Bulb Seal

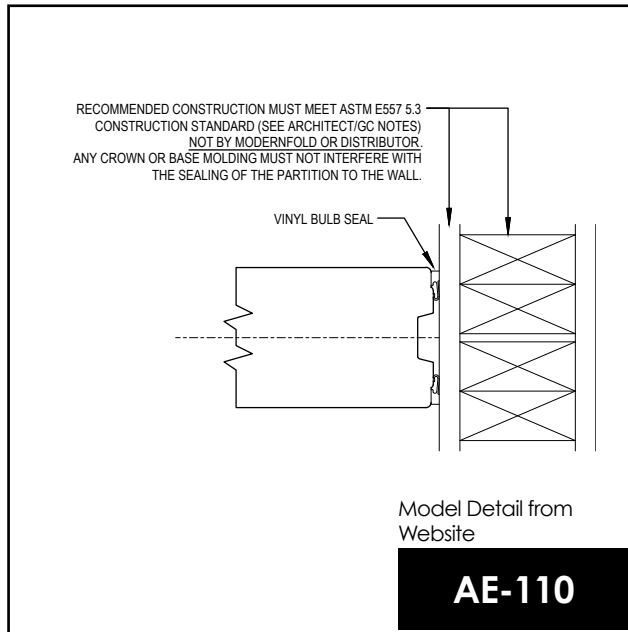


18" Expandable Panel w/ Bulb Seal

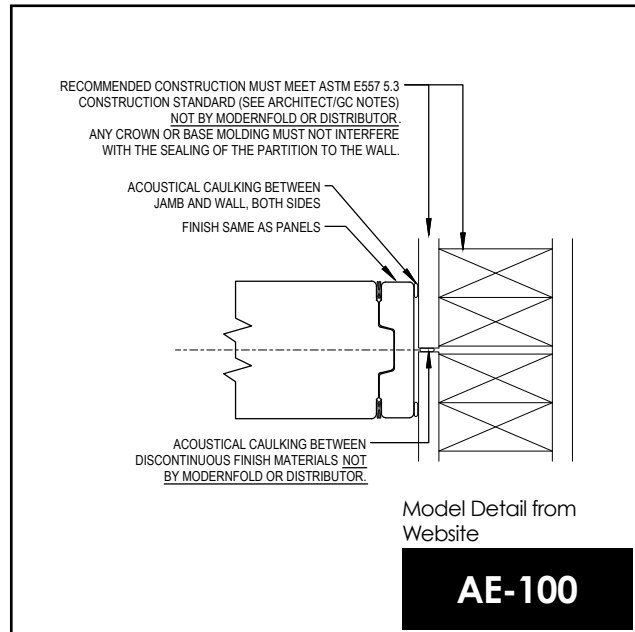


ACOUSTI-SEAL® ENCORE® SERIES TECHNICAL DATA
PANEL CROSS SECTIONS

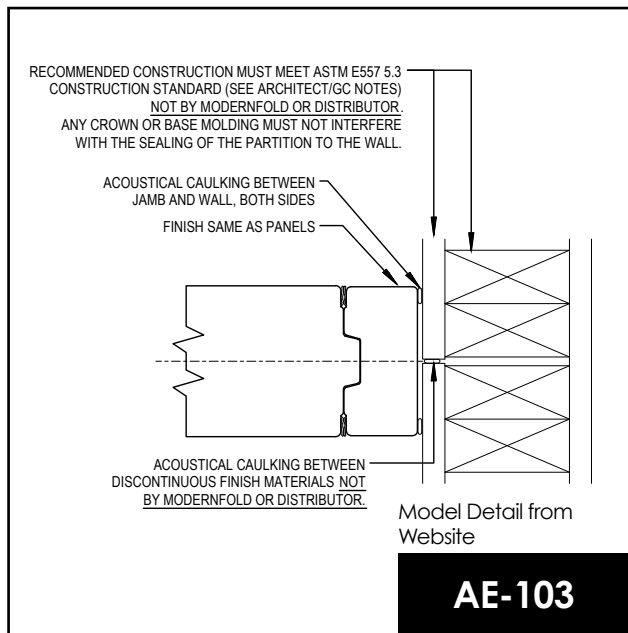
Bulb Seal



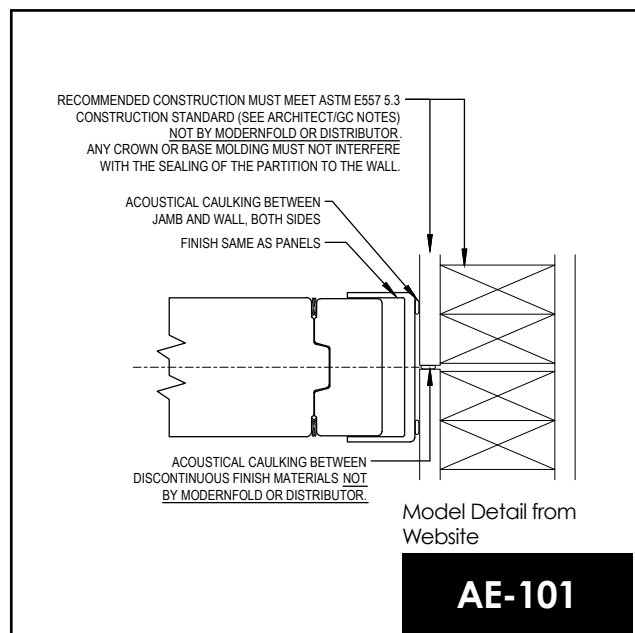
Nominal Fixed Jamb



2" Fixed Jamb



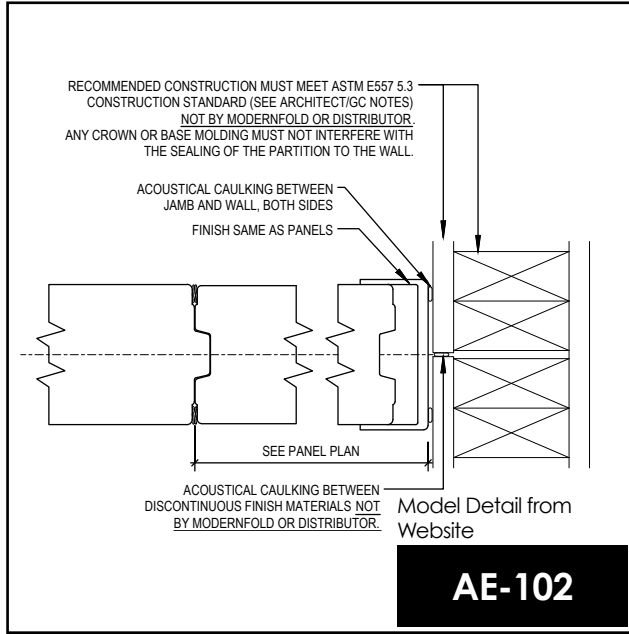
3" Adjustable Jamb



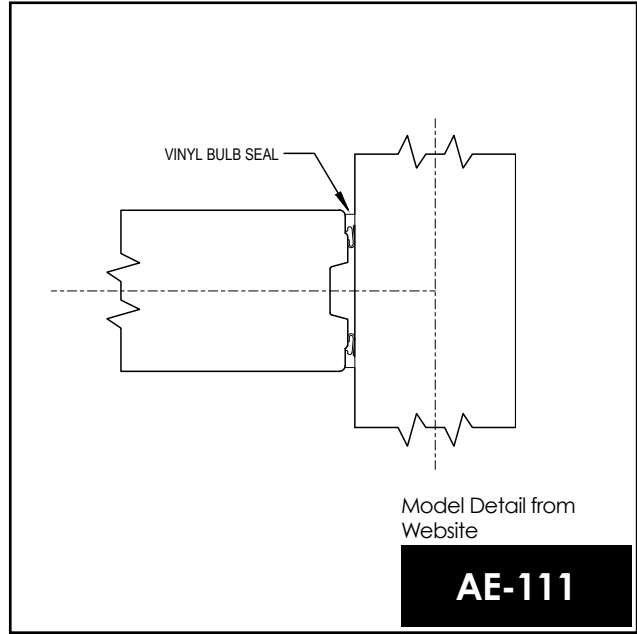
Model details (dwg), specifications, and product information available at www.modernfold.com.

ACOUSTI-SEAL® ENCORE® SERIES TECHNICAL DATA
PANEL CROSS SECTIONS

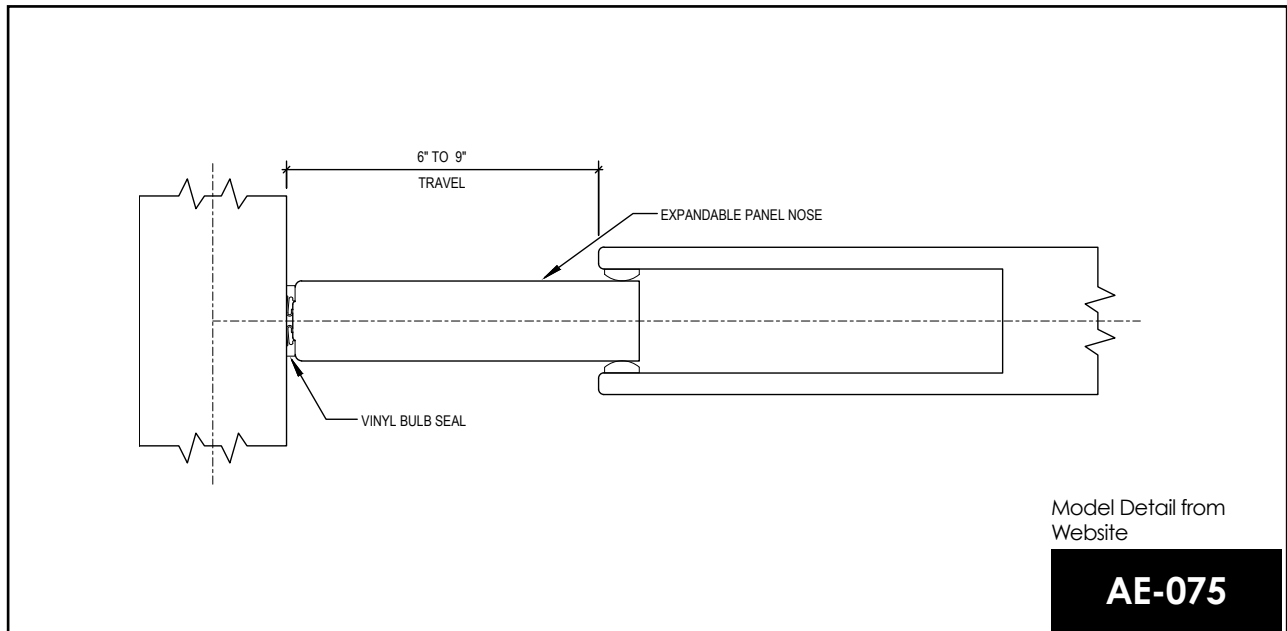
4"-6" Variable Fixed Jamb



Bulb Seal and Intersection



Expandable Panel and Intersection





215 West New Road
Greenfield, IN 46140

Tel: 800.869.9685

Email: info@modernfold.com
Website: www.modernfold.com